




# Circulating myeloid-derived suppressor cells and regulatory T cells as immunological biomarkers in refractory/relapsed diffuse large B-cell lymphoma: translational results from the R2-GDP-GOTEL trial

Carlos Jiménez-Cortegana,<sup>1</sup> Natalia Palazón-Carrión,<sup>2</sup> Alejandro Martín García-Sancho,<sup>3</sup> Esteban Nogales-Fernandez,<sup>2</sup> Fernando Carnicero-González,<sup>4</sup> Eduardo Ríos-Herranz,<sup>5</sup> Fatima de la Cruz-Vicente,<sup>6</sup> Guillermo Rodríguez-García,<sup>6</sup> Rubén Fernández-Álvarez,<sup>7</sup> Antonio Rueda Dominguez,<sup>8</sup> Maria Casanova-Espinosa,<sup>8</sup> Natividad Martínez-Banaclocha,<sup>9</sup> Josep Gumà-Padrò,<sup>10</sup> José Gómez-Codina,<sup>11</sup> Jorge Labrador,<sup>12</sup> Antonio Salar-Silvestre,<sup>13</sup> Delvys Rodriguez-Abreu,<sup>14</sup> Laura Galvez-Carvajal,<sup>15</sup> Mariano Provencio,<sup>16</sup> Margarita Sánchez-Beato ,<sup>17</sup> María Guirado-Risueño,<sup>18</sup> Pablo Espejo-García,<sup>2</sup> Marylene Lejeune,<sup>19</sup> Tomás Álvaro,<sup>20</sup> Victor Sánchez-Margalet ,<sup>1</sup> Luis de la Cruz-Merino ,<sup>2</sup> On behalf of the Spanish Lymphoma Oncology Group (GOTEL) and the Spanish Group for Immunobiotherapy of Cancer (GÉTICA)

**To cite:** Jiménez-Cortegana C, Palazón-Carrión N, Martín García-Sancho A, *et al.* Circulating myeloid-derived suppressor cells and regulatory T cells as immunological biomarkers in refractory/relapsed diffuse large B-cell lymphoma: translational results from the R2-GDP-GOTEL trial. *Journal for ImmunoTherapy of Cancer* 2021;**9**:e002323. doi:10.1136/jitc-2020-002323

Accepted 08 May 2021



© Author(s) (or their employer(s)) 2021. Re-use permitted under CC BY-NC. No commercial re-use. See rights and permissions. Published by BMJ.

For numbered affiliations see end of article.

## Correspondence to

Professor Victor Sánchez-Margalet; margalet@us.es

Dr Luis de la Cruz-Merino; ldelacruzmerino@gmail.com

## ABSTRACT

**Background** The search for immunological markers with ability of predicting clinical outcome is a priority in lymphomas, and in cancer in general. It is well known that some immunomodulatory cells, such as myeloid derived suppressor cells (MDSCs) or regulatory T cells (Tregs), are recruited by tumors, jeopardizing antitumor immunosurveillance. In this work, we have studied blood levels of these immunosuppressive cells in patients with relapsed/refractory diffuse large B-cell lymphoma (R/R DLBCL), prior to and along the course of the experimental rituximab, gemcitabine, dexamethasone, and cisplatin (R2-GDP) schedule, as a translational substudy of the R2-GDP-GOTEL trial (EudraCT Number: 2014-001620-29), which included lenalidomide as an immunomodulator.

**Methods** Blood samples were taken before treatment, at cycle 3 and end of induction. Samples were analyzed by flow cytometry. Non-parametric tests were used. Mann-Whitney U test was used to compare basal cells distributions, and Wilcoxon test was considered to compare cells distribution at different times. Spearman test was performed to measure the degree of association between cell populations.

**Results** In this study, MDSC and Treg circulating concentration was found increased in all patients compared with a healthy control group and decreased after treatment only in patients with longest overall survival (>24 months), reaching the levels of the healthy

group. Likewise, the number of inhibited T lymphocytes expressing Programmed Death-1 (PD-1) were increased in peripheral blood from patients and decreased on the treatment, whereas activated T lymphocytes increased after therapy in those with better overall survival.

**Conclusions** In conclusion, blood concentration of MDSCs and Treg cells may be good prognostic markers for overall survival after 2 years in R/R DLBCL. These results point to a possible role of these elements in the immunosuppression of these patients, as assessed by the circulating activated and inhibited T lymphocytes, and therefore, they may be considered as therapeutic targets in DLBCL.

## INTRODUCTION

Diffuse large B-cell lymphoma (DLBCL) is the most common non-Hodgkin's lymphoma, representing about 30%–40% of new cases.<sup>1</sup> Approximately, one-third of DLBCL patients develops relapsed/refractory (R/R) disease after standard therapies, that include rituximab.<sup>2</sup> The standard second-line treatment in R/R DLBCL is salvage chemotherapy (CT), followed by autologous stem cell transplantation (ASCT). In most cases, however, patients relapse after ASCT or are not eligible for transplantation due to ineffective salvage treatment.<sup>3</sup>

At this point, rituximab, gemcitabine, dexamethasone, and cisplatin (R2-GDP) schedule, which includes lenalidomide combined with R-GDP, was used in R/R DLBCL patients in the study ‘phase II clinical trial to evaluate the combination of lenalidomide with R-GDP in patients diagnosed with R/R DLBCL not candidates for high-dose CT and hematopoietic progenitor cell transplantation’ (EudraCT Number: 2014-001620-29), performed by the Spanish Lymphoma Oncology Group (GOTEL). Lenalidomide is an immunomodulatory drug derived from thalidomide and its functions have been extensively described, mainly increasing T cell immune responses against tumors<sup>4</sup> and in combination with rituximab, overcoming its resistance in patients with indolent B-cell and mantle cell lymphomas who were previously rituximab resistant.<sup>5</sup>

Some studies have evaluated alternative schedules to ASCT or first-line treatments since the outcome of both R/R patients is poor. The largest retrospective research to characterize overall response rates (ORR) and overall survival (OS) in the refractory DLBCL subpopulation is the SCHOLAR-1 study that communicated an ORR of 26% (7% of complete responses) and OS of 6.3 months.<sup>6</sup> Specifically, rituximab has been combined with other schedules,<sup>7,8</sup> showing more than 60% of ORR and a good OS in elderly patients after three or more years. Lenalidomide combined with rituximab (R2) has already been tested in R/R DLBCL patients. Phase II clinical trials concluded that R2-CHOP could improve the response and outcome of patients after six cycles of treatment.<sup>9,10</sup> R2 has also been tested alone,<sup>11</sup> showing interesting activity. In addition, a phase 1b study from GELTAMO group showed an ORR of 78.9% and an OS of 63% after 2 years combining lenalidomide with R-ESHAP.<sup>12</sup>

Considering the heterogeneity of the disease, the dismal prognosis of elderly R/R DLBCL patients and the different clinical outcomes reached,<sup>13</sup> the search for new biomarkers may be considered as a research priority. Some prognostic markers have been widely described and tested in DLBCL, such as the International Prognostic Index (IPI) or the most recent revised version in the rituximab era (R-IPI), the immunohistochemical or molecular findings as those defining double and triple hit DLBCL, among others. Furthermore, the immune system seems to play an important role in this disease.<sup>1</sup> In this context, expansion of myeloid-derived suppressor cells (MDSCs) has been found in the tumor microenvironment (TME) and in peripheral blood (PB). MDSCs orchestrate potent immune effects favoring tumor escape and have been correlated with poorer clinical outcomes in many neoplastic diseases.<sup>14,15</sup>

Tumor cell-mediated suppression causes immune disruptions, including altered hematopoiesis. This results in a considerable expansion and accumulation of immature myeloid cells (IMCs) in the TME, in secondary lymphoid organs and tissues, driven by tumor-derived growth factors and others via STAT1, STAT3, STAT6, COX2 or the NF- $\kappa$ B pathway.<sup>15</sup> As a consequence, tumor prevents IMCs to follow their differentiation to normal

cells, such as neutrophils, monocytes, and dendritic cells, and induce their activation, which finally confer them immunosuppressive properties. For this reason, activated IMCs were proposed to be called as MDSCs by Gabrilovich *et al.*<sup>16</sup> MDSCs consist of monocytic (M-MDSCs) and granulocytic (G-MDSCs) precursors that mainly inhibit T cell immune responses using different mechanisms such as reactive oxygen species or nitrogen oxide production. MDSCs also promote angiogenesis via VEGF and suppress innate immune responses by inhibiting maturation and functions of natural killer cells and inducing macrophages into their M2 phenotype by interleukin 10 (IL-10) and transforming growth factor (TGF)- $\beta$  secretion.<sup>14,15</sup> Moreover, MDSCs also contribute to tumorous dissemination by inducing regulatory T cells (Tregs).<sup>17</sup> Tregs inhibit immune responses through different mechanisms such as IL-10, TGF- $\beta$  and IL-35 production or IL-2 recruitment.<sup>17,18</sup> Nevertheless, the prognostic role of Tregs in DLBCL remains controversial.<sup>19,20</sup>

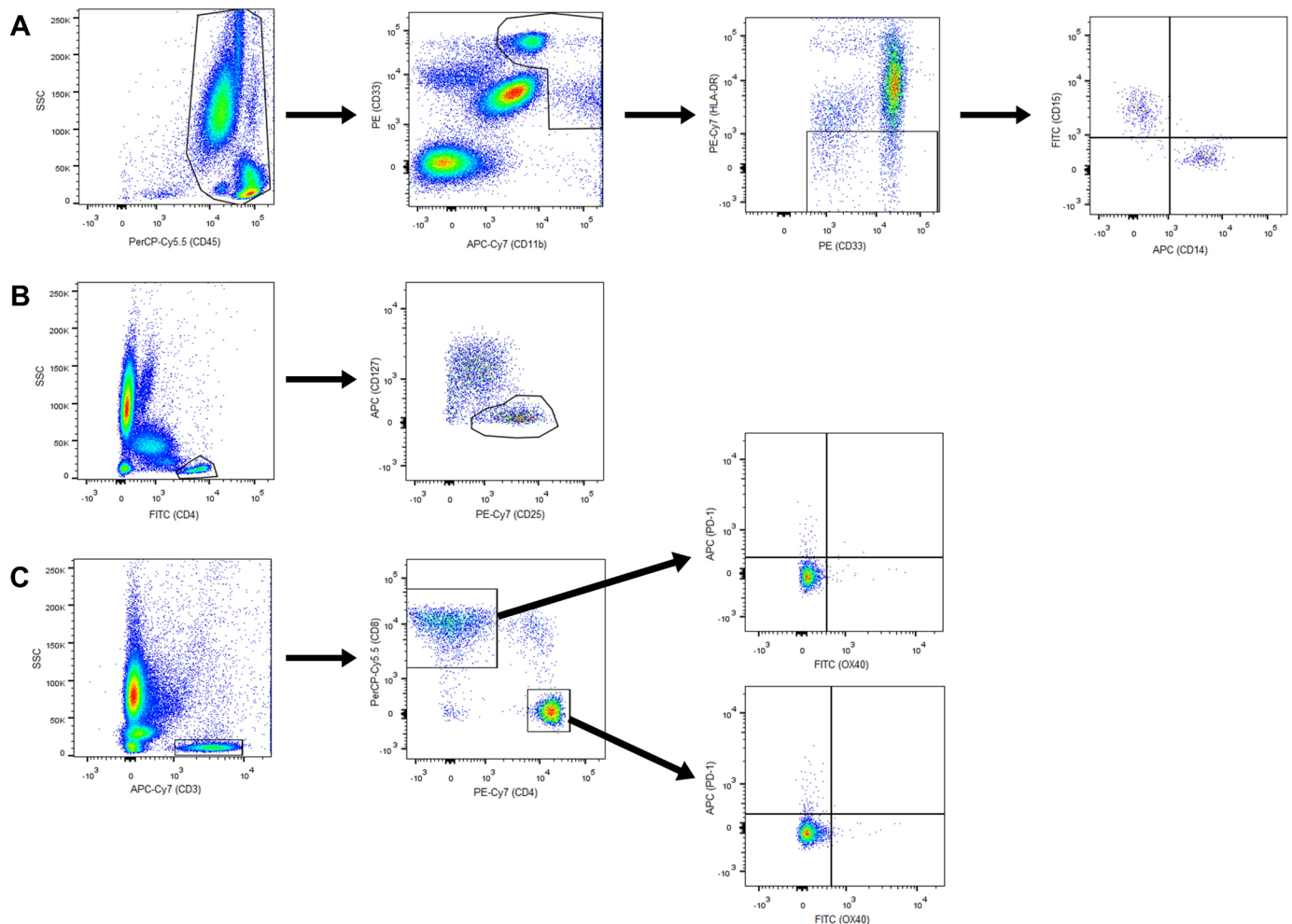
In the last few years, immune activation and inhibitory checkpoint molecules have emerged as promising biomarkers in cancer. In this sense, OX40 promotes effector T cell expansion and functions after its binding to OX40L, induced on antigen-presenting cells (APCs) such as dendritic cells, B cells or macrophages.<sup>21</sup> By contrast, Programmed Death-1 (PD-1) binds to PD-L1 or PD-L2, expressed on APCs and tumor cells, to generate inhibitory signals that downregulate T cell-mediated immune responses.<sup>22</sup> In fact, the interaction between PD-1 and its ligands is being promising to develop checkpoint blockade immunotherapies in B-cell lymphomas.<sup>23</sup>

In this work, we aimed to analyze M-MDSCs, G-MDSCs and total MDSCs in PB, Tregs and activated OX40 +PD-1 and inhibited PD-1 +OX40T cells, in R/R DLBCL patients treated with the R2-GDP schedule, paying special attention, and comparing the immune profile evolution in two groups, choosing the landmark of 24 months of OS as clinical outcome of interest (OS <24 months vs OS >24 months groups). We also compared this immune profile before starting treatment with healthy donors (HD). The results obtained here support the hypothesis that consider these immune cells as promising prognostic biomarkers in DLBCL and, even more, these data point to MDSCs and Tregs as potential therapeutic targets to overcome immunosuppression in R/R DLBCL.

## MATERIAL AND METHODS

### Patients

We have studied immune cells of PB from 79 patients diagnosed of R/R DLBCL who were not high-dose CT and ASCT candidates recruited from 18 Spanish hospitals for the R2-GDP-GOTEL study (EudraCT Number: 2014-001620-29), between April 2015 and September 2018. Patients were treated with R2-GDP, based on lenalidomide +R-GDP. In July 2020, an age-matched group of 10 women and 10 men was recruited as HD from the Virgen Macarena University Hospital.



**Figure 1** Gating of cell populations by flow cytometry. (A) M-MDSCs and G-MDSCs; (B) regulatory T cells; (C) CD4+ and CD8+, activated and inhibited T cells. APC, antigen-presenting cells; G-MDSCs, granulocytic myeloid derived suppressor cells; M-MDSCs, monocytic MDSCs.

### Flow cytometry analysis in whole blood samples

Three PB analyses were carried out: basal, cycle 3 and end of induction. MDSCs, Tregs, OX40 +PD-1 and PD-1 +OX40+T cells were measured by flow cytometry using the FACSCanto II flow cytometry system (Becton Dickinson) from EDTA-K3 tubes and gated as shown in figure 1. M-MDSCs were gated as  $CD45^{+}CD11b^{+}CD33^{+}HLA-DR^{low/-}CD14^{+}CD15^{-}$  and G-MDSCs as  $CD45^{+}CD11b^{+}CD33^{+}HLA-DR^{low/-}CD14^{-}CD15^{+}$ . Tregs were determined as  $CD4^{+}CD25^{high}CD127^{low/-}$ , activated T cells as  $CD3^{+}CD4^{+}OX40^{+}PD-1^{-}$  and  $CD3^{+}CD8^{+}OX40^{+}PD-1^{-}$  and inhibited T cells as  $CD3^{+}CD4^{+}PD-1^{+}OX40^{-}$  and  $CD3^{+}CD8^{+}PD-1^{+}OX40^{-}$ . The absolute number was calculated by multiplying the percentages obtained from flow cytometry with total leukocyte count obtained from hematology count (Sysmex CS-1000). Total MDSCs were calculated as the sum of M-MDSC and G-MDSC counts, total activated T cells as the sum of  $CD3^{+}CD4^{+}OX40^{+}PD-1^{-}$  and  $CD3^{+}CD8^{+}OX40^{+}PD-1^{-}$  T cell counts, and total inhibited T cells as the sum of  $CD3^{+}CD4^{+}PD-1^{+}OX40^{-}$  and  $CD3^{+}CD8^{+}PD-1^{+}OX40^{-}$  T cell counts.

### Monoclonal antibodies

Antibodies were obtained from Becton Dickinson Immunocytometry Systems (San Jose, California, USA) and were used at the manufacturer's recommended concentrations.

MDSCs: PerCP-Cy5.5 Mouse anti-human CD 45 (ref no. 564105), APC-Cy7 rat anti-CD11b (ref no. 557657), PE mouse anti-Human CD 33 (ref no. 555450), PE-Cy7 mouse anti-human HLA-DR (ref no. 560651), FITC mouse anti-human CD 14 (ref no. 555397) and APC mouse anti-human CD 15 (ref no. 551376).

Tregs: Human Treg cocktail (ref no. 560249), including PerCP Mouse Anti-Human CD4, PE mouse anti-Human CD127, and FITC anti-human CD25.

Activated and inhibited T cells: FITC Mouse anti-human OX-40 (CD134) (ref no. 555837), PerCP-Cy5.5 mouse anti-human CD8 (ref no. 565310), PE-Cy7 mouse anti-human CD4 (ref no. 557852), APC mouse anti-human PD-1 (CD279) (ref no. 558694), APC-H7 mouse anti-human CD3 (ref no. 560176).



**Table 1** Clinical characteristics of R/R DLBCL patients

Characteristics	No (%)
Patients	79
Median age (range, years)	71.3 (25.0–88.0)
Sex	
Male	41 (51.9)
Female	38 (48.1)
Disease	
Refractory	34 (43.0)
Relapse (non-refractory)	45 (57.0)
Cell-of-origin subgroup	
GCB	27 (34.2)
Non-GCB	39 (49.4)
Not determined	13 (16.4)
Overall survival	
> 24 months	24 (30.4)
< 24 months	52 (65.8)
Not determined	3 (3.8)

GCB, germinal center B-cell like; R/R DLBCL, relapsed/refractory diffuse large B-cell lymphoma.

### Data analysis

Statistical analysis was performed by SPSS V.25.0 software package (SPSS). Normal distribution of analyzed variables was checked by watching histogram, box plot, Q-Q plot and the outcomes of normality tests of Shapiro-Wilk.

Due to absence of normality, non-parametric tests were used. Mann-Whitney U test was used to compare basal cells distributions of patients with HD, and CR with PD patients. Wilcoxon test was used to compare cells distribution of patients in basal with cycle 3, and basal with end of induction. Data shown are median and 95% CIs. Bivariate correlations among cell populations were carried out using Spearman coefficient. Statistically significant differences were considered at  $p \leq 0.05$ . Data are available on reasonable request.

## RESULTS

### Clinical characteristics of R/R DLBCL patients

From April 2015 to September 2018, a total of 79 patients diagnosed of R/R DLBCL not candidates for ASCT were recruited from 18 Spanish hospitals. Patients had to have received previously an R-CHOP-like schedule and might have an ECOG  $\leq 1$ . They were treated with the R2-GDP schedule, based on lenalidomide, R-GDP, and granulocyte colony-stimulating factor.

Information about OS included 24 patients with OS >24 months and 52 patients with OS <24 months. Their clinical characteristics are summarized in [table 1](#). During July 2019, 20 subjects were recruited as HD from the Virgen Macarena University Hospital. Similar age (median) and sex ratio were found in HD: 68.2 years old and 50% male/female ratio.

### Number of patients analyzed

Information about basal condition was not obtained in four patients from a total of 79. Thus, the number of patients analyzed before treatment was 75. In cycle 3, some patients had to be taken out from the trial due to adverse effects or death and 42 blood samples were analyzed in this cycle. Finally, 30 patients were analyzed at the end of the induction. All the HD subjects (20) were included in the analysis.

For the OS analysis, 3 patients of 79 were not included due to lack of data. For this reason, we focused this analysis in the 76 remaining patients (24 patients with OS >24 months and 52 with OS <24 months). Before treatment, all patients with OS >24 months and 48 of 52 patients with OS <24 months were analyzed (the four remaining patients corresponded to those in which basal information could not be retrieved). In cycle 3, 18 patients with OS >24 months and 21 patients with OS <24 months were studied. Finally, at the end of the induction, 12 patients with OS >24 months and 15 patients with OS <24 months were analyzed.

### Blood MDSC number in R/R DLBCL patients before and after treatment

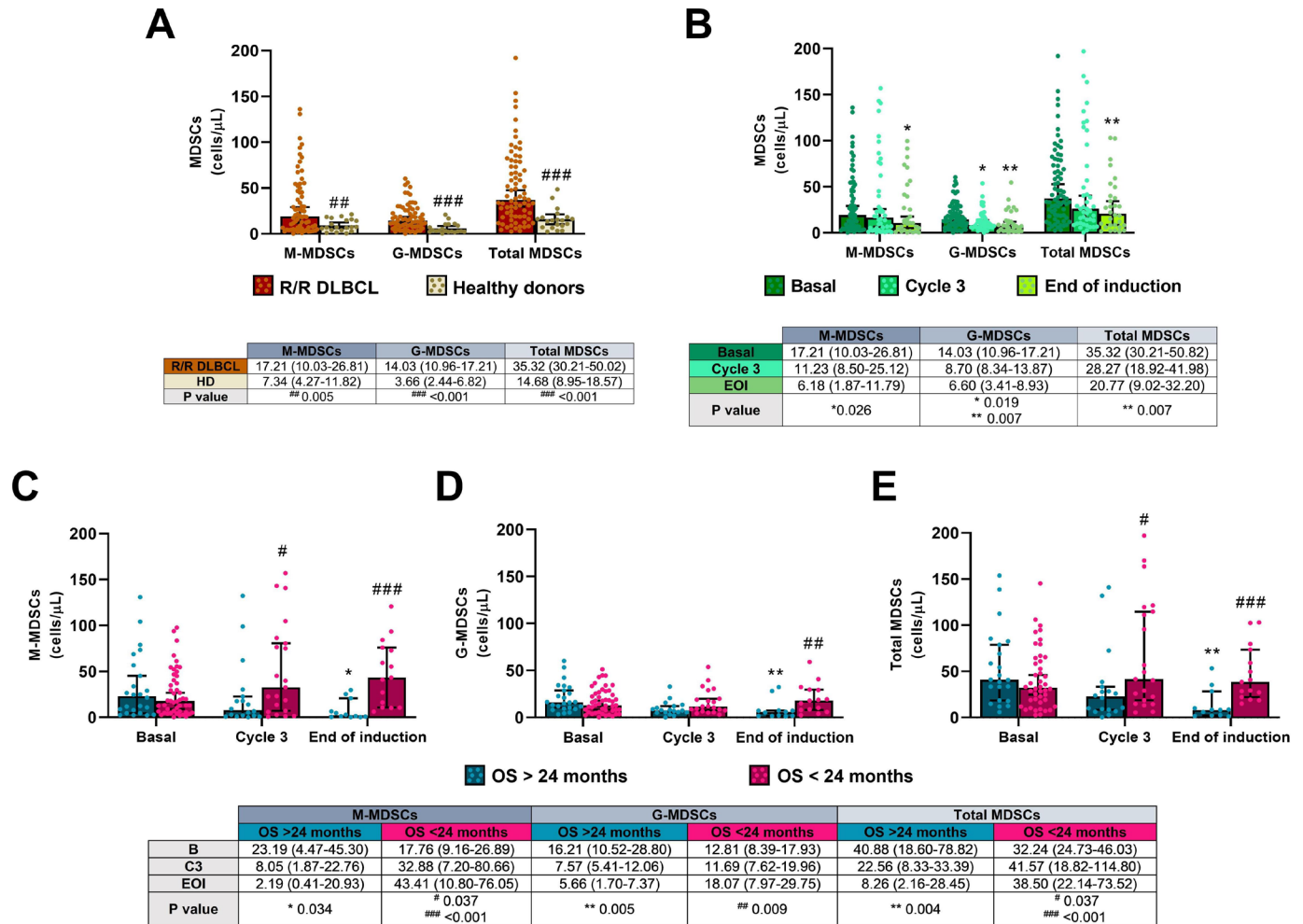
M-MDSC and G-MDSC subsets, and total MDSC levels were higher in R/R DLBCL patients before starting R2-GDP therapy compared with HD, as shown in [figure 2A](#). P values were  $p=0.005$  for M-MDSCs and  $p<0.001$  in both G-MDSCs and total MDSCs.

Both M-MDSC and G-MDSC populations decreased considerably during treatment in PB ([figure 2B](#)). After induction, there were statistically significant differences compared with basal in M-MDSCs ( $p=0.026$ ), G-MDSCs ( $p=0.007$ ) and total MDSCs ( $p=0.007$ ). Furthermore, there was a positive correlation between circulating M-MDSCs and G-MDSCs before ( $rS=0.289$ ;  $p=0.015$ ) and after the treatment ( $rS=0.520$ ;  $p=0.005$ ), as shown in [figure 3A1,B1](#), respectively.

These changes in the number of MDSCs were due to the effect on patients with OS >24 months, since a significant low level of M-MDSC and G-MDSC subsets was found in these patients at the end of the induction compared with basal status ( $p=0.034$  and  $p=0.005$ , respectively), while they were increased in those with OS <24 months. As a result, total levels of MDSCs were also significantly lower in the first group of patients ( $p=0.004$ ), as shown in [figure 2C–E](#). After treatment, statistically significant differences were found in M-MDSCs ( $p<0.001$ ), G-MDSCs ( $p=0.009$ ) and total MDSCs ( $p<0.001$ ) between both groups.

### Blood Treg number in R/R DLBCL patients before and after treatment

Concentration of Tregs was significantly higher in R/R DLBCL patients than that in healthy subjects ( $p=0.003$ ), as shown in [figure 4A](#). However, as observed in MDSCs, Treg levels were significantly reduced during the therapy when all patients were included in the analysis ( $p=0.002$ ;



**Figure 2** M-MDSCs, G-MDSCs and total MDSCs in the R2-GDP-GOTEL clinical trial. (A) Cell concentrations before treatment compared with healthy donors (HD); (B) evolution of MDSCs during basal (B), cycle 3 (C3) and end of induction (EOI) involving all patients recruited; (C) evolution of M-MDSCs in patients with overall survival (OS) >24 months and OS <24 months during B, C3 and EOI; (D) evolution of G-MDSCs in patients with OS >24 months and OS <24 months during B, C3 and EOI; (E) evolution of total MDSCs in patients with OS >24 months and OS <24 months during B, C3 and EOI. All data shown are medians and 95% CIs of cells/L. # $p \leq 0.05$ , ## $p \leq 0.01$ , ### $p \leq 0.001$  comparing opposite subject groups, respectively; \* $p \leq 0.05$ , \*\* $p \leq 0.01$  compared with basal, respectively. G-MDSCs, granulocytic myeloid derived suppressor cells; GOTEL, Spanish Lymphoma Oncology Group; M-MDSCs, monocytic MDSCs; R2-GDP, rituximab, gemcitabine, dexamethasone, and cisplatin; R/R DLBCL, relapsed/refractory diffuse large B-cell lymphoma.

figure 4B). Tregs in PB were remarkably reduced in patients with OS >24 months at cycle 3 ( $p=0.005$ ) and at the end of the induction ( $p<0.001$ ) but remained constant in those with lower OS (figure 4C). Statistically significant differences were also found between these groups at cycle 3 and the end of the induction ( $p=0.008$  and  $p<0.001$ , respectively).

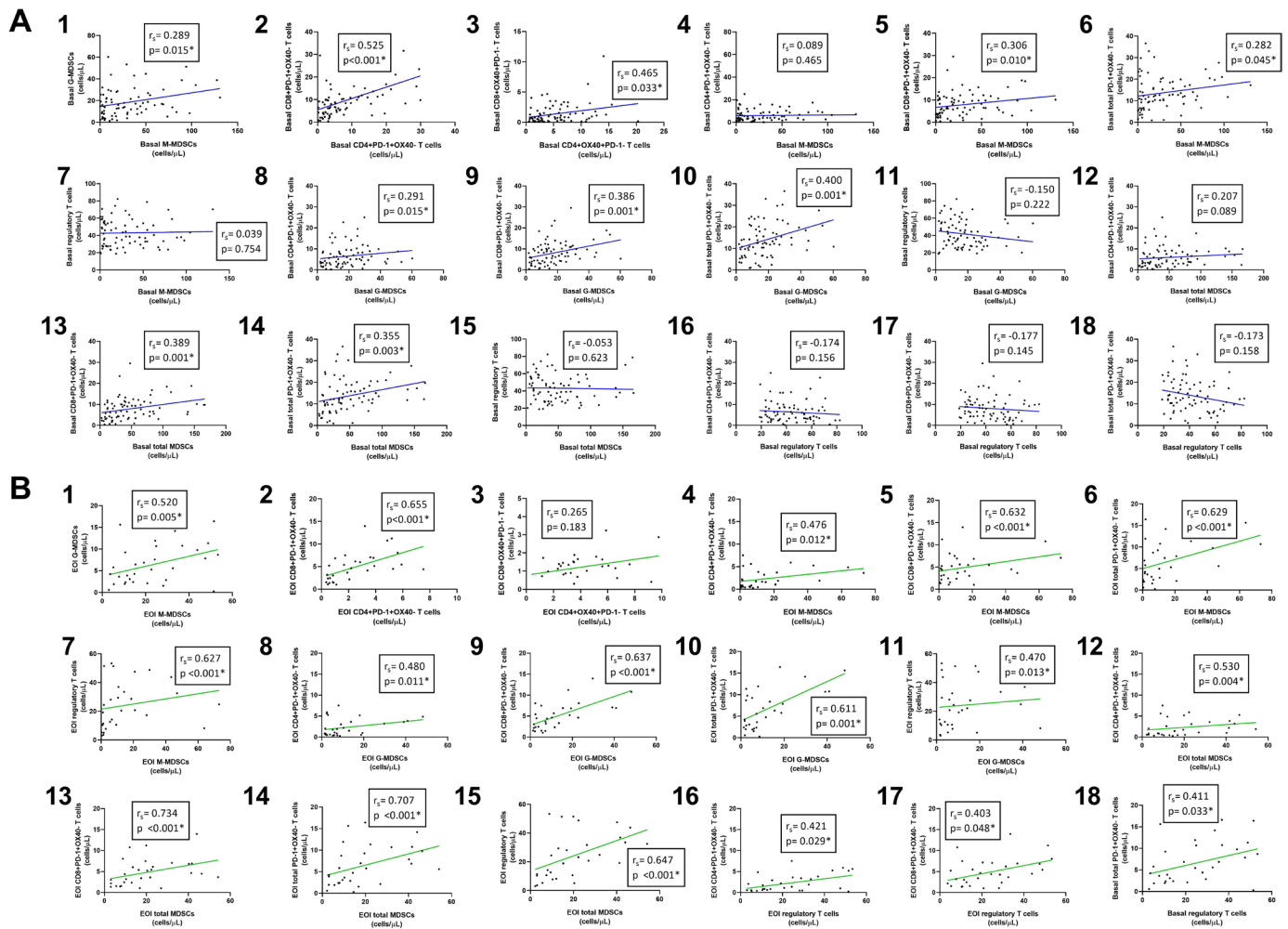
#### Blood inhibited T cell number in R/R DLBCL patients before-and-after treatment

Concentrations of CD4+, CD8+, and total inhibited (PD-1 +OX40-) T cells were notably higher in the patients before the induction compared with HD ( $p=0.004$  in CD4+ and  $p<0.001$  in both CD8+ and total inhibited T cells), as shown in figure 5A.

All inhibited T cells dropped significantly after R2-GDP when recruited patients undertook the treatment

collected for this analysis (figure 5B). Significant differences in PB cells between basal and the end of the induction were found in inhibited CD4+ ( $p=0.001$ ), CD8+ ( $p=0.003$ ) and total PD-1 +OX40+ T cells ( $p<0.001$ ), although statistical differences were also found between basal and cycle 3 in the three cell populations ( $p=0.001$ ,  $p=0.014$  and  $p=0.002$ , respectively). A positive correlation between circulating CD4+ and CD8+ inhibited T cells were also found before ( $r_s=0.525$ ,  $p<0.001$ ) and after treatment ( $r_s=0.655$ ,  $p<0.001$ ), as shown in figure 3A2,B2, respectively.

Levels of inhibited T cells were significantly diminished after treatment in patients with better OS ( $p=0.027$  in CD4+,  $p=0.016$  in CD8+, and  $p=0.012$  in total inhibited T cells comparing the end of the induction with the basal condition), while cell concentrations remained constant



**Figure 3** Correlations between cell populations using non-parametric Spearman test. (A) Correlations before treatment (blue lines); (B) correlations after treatment (green lines). EOI, end of induction; MDSCs, myeloid derived suppressor cells.

during treatment in the group of worse OS, as shown in figure 5C–E. In this case, there were also statistically significant differences between the two groups of patients after treatment ( $p < 0.001$  in all CD4+, CD8+, and total inhibited cells).

#### Blood activated T cell number in R/R DLBCL patients before and after treatment

Concentrations of CD4+, CD8+, and total activated (OX40+PD-1-) T cells were lower in all patients before starting treatment compared with the healthy cohort ( $p < 0.001$  in all three cases), as shown in figure 6A.

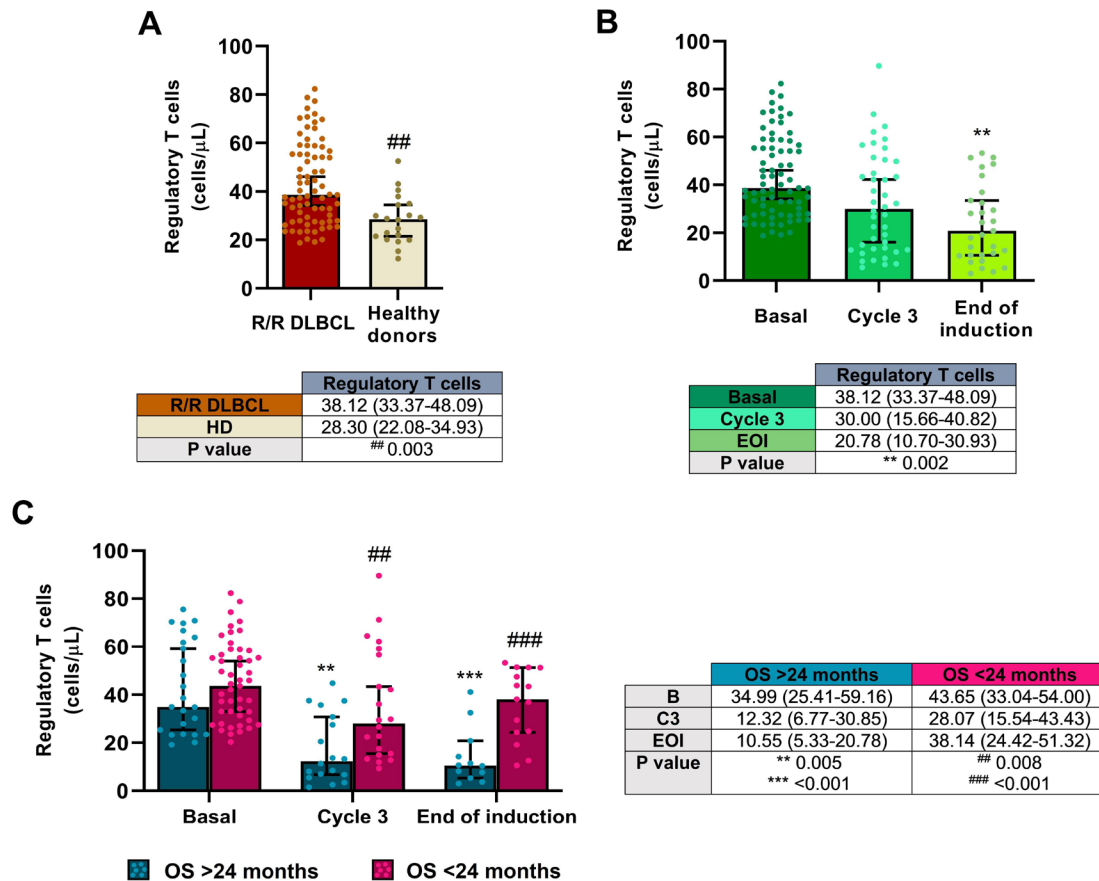
All activated T cells analyzed were increased throughout treatment when all recruited patients were included in the analysis (figure 6B). Significant differences in circulating cells between basal and the end of the induction were only found in CD4+ activated T cells ( $p = 0.002$ ), but not in CD8+ and total activated T cells ( $p = 0.123$  and  $p = 0.088$ , respectively). Furthermore, there was a positive correlation between the levels of activated CD4+ and CD8+ T cells before the treatment ( $r_s = 0.465$ ;  $p = 0.033$ ), but not at the end ( $r_s = 0.265$ ;  $p = 0.183$ ), as shown in figure 3A3,B3, respectively.

Concentrations of activated T cells increased during treatment in patients with OS  $> 24$  months, while a decrease trend was found in patients with OS  $< 24$  months. Significant differences between basal condition and the end of the treatment were only found in activated CD8+ T cells from the better OS group ( $p = 0.049$ ; figure 6D) and between the two groups at the end of the induction in CD4+, CD8+ and total activated T cells ( $p = 0.016$ ,  $p < 0.001$  and  $p = 0.005$  in figure 6C–E, respectively).

#### DISCUSSION

In the last decades, the heterogeneity of DLBCL and its poor outcome, especially in the R/R setting, have led to seek different prognosis factors that may predict the clinical outcome of patients, such as IPI or R-IPI, immunohistochemical or molecular tools, micro-RNAs and even vitamin D determinations. Nevertheless, the composition of the TME also seems to be a promising prognostic factor. In this regard, the stromal signature composed by monocyte/macrophage infiltrates has been correlated with a good prognosis in DLBCL, while stromal signature composed by factors that promote angiogenesis and





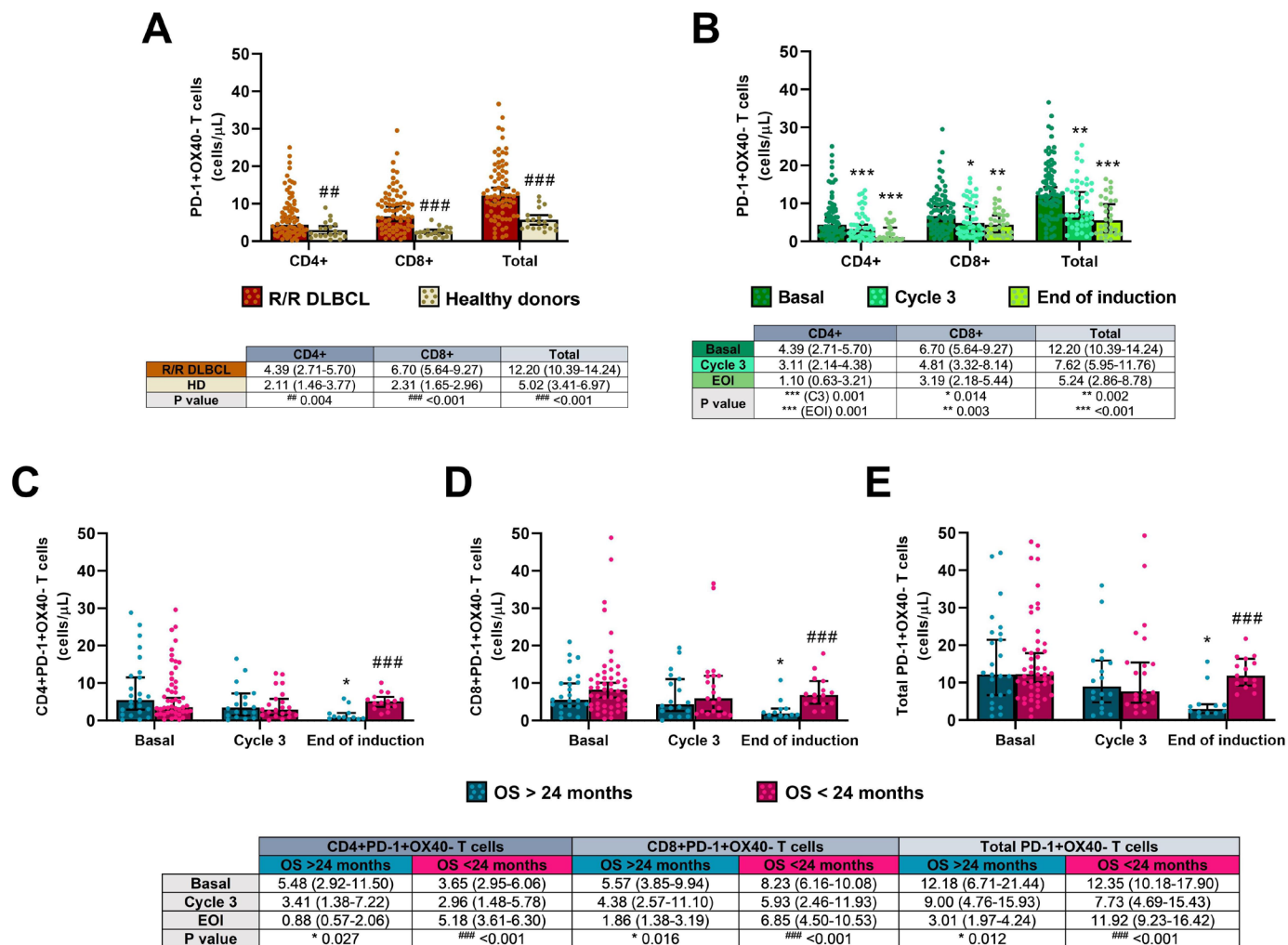
**Figure 4** Tregs in the R2-GDP-GOTEL clinical trial. (A) Cell concentrations before treatment compared with HD; (B) evolution of Tregs during B, C3 and EOI involving all patients recruited; (C) evolution of Tregs in patients with OS >24 months and OS <24 months during B, C3 and EOI. All data shown are medians and 95% CIs of cells/L. ## $P \leq 0.01$ , ### $p \leq 0.001$  comparing opposite subject groups, respectively; \*\* $p \leq 0.01$ , \*\*\* $p \leq 0.001$  compared with basal, respectively. EOI, end of induction; GOTEL, Spanish Lymphoma Oncology Group; HD, healthy donors; OS, overall survival; R2-GDP, rituximab, gemcitabine, dexamethasone, and cisplatin; R/R DLBCL, relapsed/refractory diffuse large B-cell lymphoma.

blood vessel density has been correlated with a worse prognosis.<sup>24</sup> Although monocyte infiltrate is associated with a better outcome, monocytes with a low HLA-DR expression have been correlated with more aggressive DLBCLs and progression,<sup>25</sup> like immunosuppressive CD14 +HLADR low/- monocytes mediated by the arginine metabolism in PB of B-cell non-Hodgkin's lymphoma patients, considered as a phenotypically different population of monocytes from MDSCs,<sup>26</sup> that also express CD33 and CD11b, among others.<sup>15</sup>

Due to the high variety of monocytes, which give them plasticity, M-MDSCs show a close relationship with other monocyte subsets. Canè *et al* reviewed that common monocyte progenitors (CMPs) are differentiated into some types of cells, such as inflammatory monocytes, M-MDSCs or other immature monocytes. Particularly, CMPs can be differentiated into M-MDSCs via VEGF by upregulating ARG1 and iNOS through NF- $\kappa$ B and elements related to hypoxia, avoiding their maturation to normal monocytes, macrophages, or dendritic cells (although M-MDSCs could also become APCs by inflammation-induced activation of p53).<sup>27</sup> In addition, M-MDSCs have a close connection with tumor-associated macrophages (TAMs), which

are present in a high (M2 phenotype) and a low (M1 phenotype) proportion in the TME, while M1 macrophages are predominant in healthy individuals. In this sense, M-MDSCs can also prevent their differentiation to mature cells maintaining the STAT3 activity; however, because of the effects of hypoxia, STAT3 activity can be highly reduced in the TME, leading the differentiation from M-MDSCs to TAMs.<sup>15</sup>

In our work, R/R DLBCL patients from the R2-GDP-GOTEL trial showed increased baseline levels of M-MDSCs, G-MDSCs and, consequently, total MDSCs in PB compared with HD. Therefore, tumor escape and immunosuppression mediated by MDSCs seem evident before receiving treatment, as described in other studies.<sup>26-28-30</sup> Azzaoui *et al* were the first authors to study both M-MDSCs and G-MDSCs in PB of DLBCL patients at diagnosis, and they also found higher levels of these subsets in comparison with HD.<sup>29</sup> Their conclusions included an interest in monitoring these cell populations during the course of the treatment. Thus, we decided to monitor MDSCs in all patients and put the focus in the two main populations (M-MDSCs and G-MDSCs) with better (>24 months) and worse (<24 months) OS. To our knowledge, this is the



**Figure 5** Inhibited PD-1 +OX40T cells in the R2-GDP-GOTEL clinical trial. (A) Cell concentrations before treatment compared with HD; (B) evolution of inhibited T cells during B, C3 and EOI involving all patients recruited; (C) evolution of inhibited CD4+T cells in patients with OS >24 months and OS <24 months during B, C3 and EOI; (D) evolution of inhibited CD8+T cells in patients with OS >24 months and OS <24 months during B, C3 and EOI; (E) evolution of total inhibited T cells in patients with OS >24 months and OS <24 months during B, C3 and EOI. All data shown are medians and 95% CIs of cells/L. ##P≤0.01, ###p≤0.001 comparing opposite subject groups, respectively; \*p≤0.05, \*\*p≤0.01, \*\*\*p≤0.001 compared with basal, respectively. EOI, end of induction; GOTEL, Spanish Lymphoma Oncology Group; HD, healthy donors; OS, overall survival; R2-GDP, rituximab, gemcitabine, dexamethasone, and cisplatin; R/R DLBCL, relapsed/refractory diffuse large B-cell lymphoma.

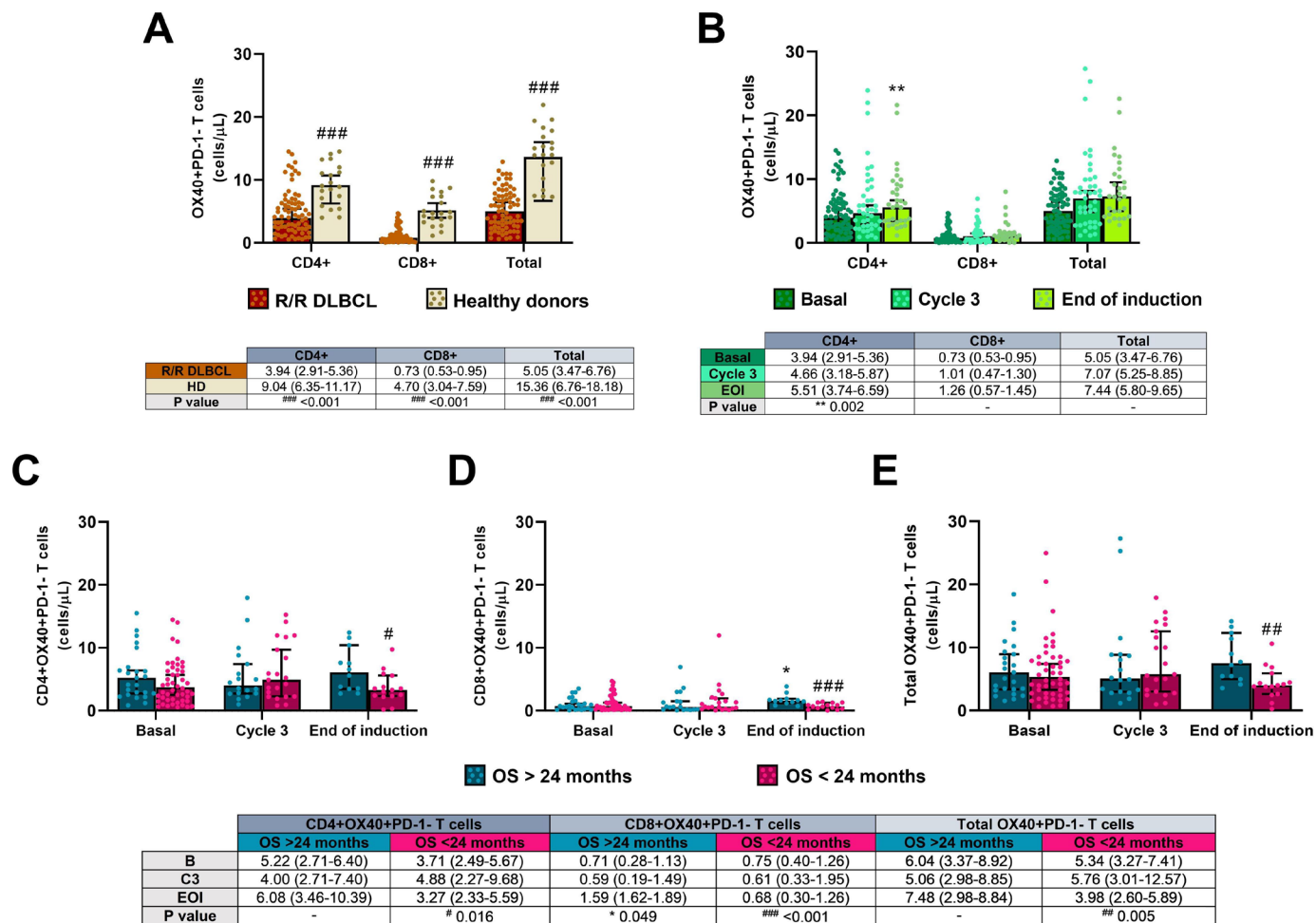
first time that circulating MDSCs are monitored during the follow-up of patients in DLBCL. Patients with OS >24 months showed a significant reduction in all MDSC populations, whereas the group with the worse OS experienced an increase in MDSC levels. At the end of the induction, there were also significant differences between the two OS groups in all MDSCs levels. These findings confirm that a decrease of MDSC levels is correlated with a better OS, improving the clinical outcome.

As previously mentioned, MDSCs induce T cells to their regulatory phenotype. Nevertheless, the role of Tregs in cancer seems to be uncertain since they have been associated with both good and poor prognosis, possibly due to environmental factors, tumor-derived products, and cytokine production that may affect Treg generation, recruitment and survival.<sup>31</sup> Specifically, in DLBCL, Treg levels can also vary due to the location (TME and PB)

or the phenotype (germinal center B-cell like (GCB) and ABC/non-GCB).<sup>20</sup> Furthermore, Tregs can be gated in different ways, but commonly CD4+CD25+ and CD127- or FOXP3 +must be included. Chang *et al* explained that Tregs gated as CD4+CD25+ in PB of DLBCL patients lead the tumor escape in the disease.<sup>20</sup>

In the R2-GDP-GOTEL study, we have found that immunosuppression may not be mediated only by MDSCs, but also by Tregs, as this T cell subset was also higher in PB of patients before starting therapy in comparison with healthy subjects. Baraka and Salem gated Tregs as CD4+CD25+FOXP3+ and obtained similar results between 45 B-cell non-Hodgkin's lymphoma patients (including 15 with DLBCL) and 20 healthy subjects.<sup>32</sup> Yin *et al* quantified CD4+CD25+CD127- Tregs from 56 patients with DLBCL and 26 healthy controls and obtained similar results.<sup>33</sup> Chang *et al* measured CD3+FOXP3+Tregs and





**Figure 6** Activated OX40 +PD-1- T cells in the R2-GDP-GOTEL clinical trial. (A) Cell concentrations before treatment compared with HD; (B) evolution of activated T cells during B, C3 and EOI involving all patients recruited; (C) evolution of activated CD4+ T cells in patients with OS >24 months and OS <24 months during B, C3 and EOI; (D) evolution of activated CD8+ T cells in patients with OS >24 months and OS <24 months during B, C3 and EOI; (E) evolution of total activated T cells in patients with OS >24 months and OS <24 months during B, C3 and EOI. All data shown are medians and 95% CIs of cells/L. #P≤0.05, ##p≤0.01, ###p≤0.001 comparing opposite subject groups, respectively; \*p≤0.05, \*\*p≤0.01 compared with basal, respectively. EOI, end of induction; GOTEL, Spanish Lymphoma Oncology Group; HD, healthy donors; OS, overall survival; R2-GDP, rituximab, gemcitabine, dexamethasone, and cisplatin; R/R DLBCL, relapsed/refractory diffuse large B-cell lymphoma.

also found higher levels of cells in 77 patients with the disease compared with 30 HD.<sup>20</sup> By contrast, low concentrations of CD4+CD25<sup>high</sup>FOXP3+ and CD4+CD25<sup>high</sup>C-D127<sup>low</sup>FOXP3+ Tregs in PB have also been observed in patients compared with healthy subjects,<sup>19 34-36</sup> which has generated some controversy that still needs to be clarified.

In terms of response and OS, the role of Tregs in DLBCL also remains unclear and different conclusions have been extracted. Despite no differences have been found before and after treatment in some cases,<sup>19 35</sup> other studies have elucidated an increase of Tregs.<sup>33 34 36</sup> In our case, R2-GDP therapy induced a decrease of circulating Tregs in patients with OS >24 months, following a similar trend to that observed in MDSCs, while Tregs were found constant in the other group of patients throughout treatment. At the end of the therapy, significant differences between OS groups were also found. Based on these results, the immunosuppression caused by accumulation of Tregs in PB was diminished in patients with the best

clinical outcome, reaching Treg values of HD. Pollari *et al* gated Tregs as CD4+FOXP3+ and FOXP3 +T-Bet+ cells and only the last population was associated with a poor outcome in testicular DLBCL.<sup>37</sup> In combination with rituximab, lenalidomide has caused the depletion of Tregs in responding patients with indolent B-cell and mantle cell lymphomas<sup>5</sup> and an increase irrespective of the response to the treatment in R/R primary DLBCL of the central nervous system.<sup>38</sup>

In addition to their regulatory functions, T cells can stimulate or inhibit the immune responses by inducing the expression of surface markers, such as OX40 and PD-1, respectively.<sup>39</sup> In the R/R DLBCL patients from the R2-GDP-GOTEL study, we could establish that immunosuppression was also mediated by significant high levels of PD-1 +OX40 T cells and low levels of OX40 +PD-1- T cells compared with healthy subjects. The clinical outcome improved in patients when CD4+, CD8+, and total inhibited T cells significantly decreased and all activated T cell

populations increased in PB, while a reverse trend was found in the group of patients with inferior OS. At the end of the induction, statistically differences were found between the groups in both activated and inhibited T cell levels, what represent quite promising results according to the clinical outcome. Although PD-1 +T cells in tissue seem to be favorable prognostic factors in DLBCL,<sup>40 41</sup> higher concentrations of CD4+PD-1+T cells in PB have been associated with a low treatment efficacy and poor event-free survival and OS.<sup>42 43</sup> Lenalidomide has also demonstrated to remarkably reduce PD-1 expression on T cells in patients with chronic lymphocytic leukemia.<sup>44</sup> On the other hand, OX40 has been found in the TME of DLBCL patients in a low proportion compared with PD-1 and has been positively correlated with a better prognosis.<sup>45</sup> Our results further support those results and highlight the importance of the findings in PB not only to monitor the OS, but also the clinical response. In fact, we previously reported preliminary results in which circulating MDSCs were reduced in R/R DLBCL patients with clinical benefit (CB) using the R2-GDP schedule<sup>46</sup> and now we are showing similar results according to the 2year-OS. In the same line, our group also reported the depletion of MDSCs in CB patients in advanced breast cancer.<sup>47 48</sup> Those results suggest the importance of the drop in the levels of MDSCs irrespective of the therapy used.

The results we are discussing here are also supported by the positive correlations among MDSCs, Tregs and PD-1 +OX40T cells in the R/R DLBCL patients (correlation data shown in [figure 3](#)), making clear that these cell populations have immunosuppressive functions and shape a complex network that could be dismantled by an active immune response. In this sense, tumor-infiltrating lymphocytes play an important role since their functions can be enhanced by immunotherapies, such as R2-GDP in R/R DLBCL. Currently, modern immunotherapy has definitely proved to be beneficial to oncohematological patients, since its efficacy in terms of OS impact has been demonstrated in a wide variety of tumors with different biological origin and clinical behavior.<sup>49</sup>

In conclusion, the research of this study has been focused on potential cell biomarkers found in PB of patients with R/R DLBCL monitoring the OS up to 24 months using R2-GDP as an immunotherapeutic schedule. We have demonstrated a significant depletion of MDSCs and Tregs in patients with OS >24 months. Consequently, both cell populations could be potential therapeutic targets to overcome immunosuppression in R/R DLBCL, especially in the case of MDSCs, since their role in cancer seems to be clearer. In fact, the decrease in MDSCs may contribute to the increase in activated OX40 +PD-1-, and the decrease in inhibited PD-1 +OX40T cells in DLBCL.

Even though a limitation of this work could be the sample size of the study, it should be considered the high statistically significance found in the concentration of the different cell populations depending on the OS group.

Nevertheless, additional studies are required to confirm these results.

In any case, our data support the hypothesis that MDSCs are good predictive markers of OS in R/R DLBCL patients and the consistent data of positive correlations of MDSCs with Tregs and inhibited T lymphocytes points to a possible immunoregulatory role of MDSCs in R/R DLBCL patients, that could therefore be considered as a target for immunotherapy.

#### Author affiliations

<sup>1</sup>Medical Biochemistry and Molecular Biology and Immunology, Virgen Macarena University Hospital, Sevilla, Spain

<sup>2</sup>Clinical Oncology Dept. Medicine Department, University of Seville, Virgen Macarena University Hospital, Sevilla, Spain

<sup>3</sup>Hematology Dept, Hospital Universitario de Salamanca, IBSAL, CIBERONC, Salamanca, Spain

<sup>4</sup>Hematology Dept, San Pedro de Alc ntara Hospital, C ceres, Spain

<sup>5</sup>Hematology Dept, Virgen de Valme University Hospital, Sevilla, Spain

<sup>6</sup>Hematology Dept, Virgen del Roc o University Hospital, Sevilla, Spain

<sup>7</sup>Hematology Dept, Cabue es Hospital, Gij n, Spain

<sup>8</sup>Hematology/ClinicalOncology Dept, Costa del Sol Hospital, Marbella, M laga, Spain

<sup>9</sup>Clinical Oncology Dept, Alicante General University Hospital, Alicante, Spain

<sup>10</sup>Clinical Oncology Dept, Sant Joan de Reus University Hospital URV, IISPV, Reus, Spain

<sup>11</sup>Clinical Oncology Dept, La F  University Hospital, Valencia, Spain

<sup>12</sup>Hematology Dept, Hospital Universitario de Burgos, Burgos, Spain

<sup>13</sup>Hematology Dept, Hospital del Mar, Barcelona, Spain

<sup>14</sup>Clinical Oncology Dept, Insular University Hospital, Las Palmas de Gran Canaria, Spain

<sup>15</sup>Unidad de gesti n Cl nica Intercentros de Oncolog a M dica de M laga, Hospitales Universitarios Regional y Virgen de la Victoria, M laga, Spain

<sup>16</sup>Clinical Oncology Dept, Puerta de Hierro University Hospital, Majadahonda, Madrid, Spain

<sup>17</sup>Lymphoma Research Group, Clinical Oncology Dept, Instituto de Investigaci n Sanitaria Puerta de Hierro-Segovia de Arana, Majadahonda, Madrid, Spain

<sup>18</sup>Clinical Oncology Dept, Elche General University Hospital General, Elche, Alicante, Spain

<sup>19</sup>Pathology Department, Plataforma de Estudios Histol gicos, Citol gicos y de Digitalizaci n, Hospital de Tortosa Verge de la Cinta, IISPV, URV, Tortosa, Tarragona, Spain

<sup>20</sup>Pathology Dept, Hospital de Tortosa Verge de la Cinta, Catalan Institute of Health, Institut d'Investigaci  Sanit ria Pere Virgili (IISPV), Tortosa, Tarragona, Spain

**Twitter** Luis de la Cruz-Merino @Luis De la Cruz Merino

**Acknowledgements** We thank the patients and their families for their commitment and the persons from the healthy cohort for their voluntariness. We also want to thank to Rosso-Fern ndez Clara M. and Borreguero Borreguero I. from the CTU-HUVIR; Clinical Trials Unit, Hospital Universitario Virgen del Roc o. Spanish Clinical Research and Clinical Trials Platform (SCReN,PT13/PT17/0017/0012). Finally, we want to acknowledge the help and compromise of Armando Ortega Cejas (former Celgene medical advisor).

**Contributors** All authors contributed in obtaining data, analysis and revision of the manuscript.

**Funding** This study was sponsored by the Spanish Lymphoma Oncology Group (GOTEL) with support of Celgene.

**Competing interests** None declared.

**Patient consent for publication** Not required.

**Provenance and peer review** Not commissioned; externally peer reviewed.

**Data availability statement** Data are available on reasonable request. Anonymised data are available on reasonable request.

**Open access** This is an open access article distributed in accordance with the Creative Commons Attribution Non Commercial (CC BY-NC 4.0) license, which permits others to distribute, remix, adapt, build upon this work non-commercially, and license their derivative works on different terms, provided the original work is

properly cited, appropriate credit is given, any changes made indicated, and the use is non-commercial. See <http://creativecommons.org/licenses/by-nc/4.0/>.

## ORCID iDs

Margarita Sánchez-Beato <http://orcid.org/0000-0002-0058-7599>

Victor Sánchez-Margalet <http://orcid.org/0000-0001-8638-8680>

Luis de la Cruz-Merino <http://orcid.org/0000-0002-5333-0535>

## REFERENCES

- Li S, Young KH, Medeiros LJ. Diffuse large B-cell lymphoma. *Pathology* 2018;50:74–87.
- Friedberg JW. Relapsed/Refractory diffuse large B-cell lymphoma. *Hemat-Am Soc Hemat* 2011;1:498–505.
- Gisselbrecht C, Van Den Neste E. How I manage patients with relapsed/refractory diffuse large B cell lymphoma. *Br J Haematol* 2018;182:633–43.
- McDaniel JM, Pinilla-Ibarz J, Epling-Burnette PK. Molecular action of lenalidomide in lymphocytes and hematologic malignancies. *Adv Hematol* 2012;2012:513702.
- Chong EA, Ahmadi T, Aquil NA, et al. Combination of lenalidomide and rituximab overcomes rituximab resistance in patients with indolent B-cell and mantle cell lymphomas. *Clin Cancer Res* 2015;21:1835–42.
- Crump M, Neelapu SS, Farooq U, et al. Outcomes in refractory diffuse large B-cell lymphoma: results from the International SCHOLAR-1 study. *Blood* 2017;130:1800–8.
- Mounier N, El Gnaoui T, Tilly H, et al. Rituximab plus gemcitabine and oxaliplatin in patients with refractory/relapsed diffuse large B-cell lymphoma who are not candidates for high-dose therapy. A phase II lymphoma study association trial. *Haematologica* 2013;98:1726–31.
- Barton S, Hawkes EA, Cunningham D, et al. Rituximab, gemcitabine, cisplatin and methylprednisolone (R-GEM-P) is an effective regimen in relapsed diffuse large B-cell lymphoma. *Eur J Haematol* 2015;94:219–26.
- Nowakowski GS, LaPlant B, Macon WR, et al. Lenalidomide combined with R-CHOP overcomes negative prognostic impact of non-germinal center B-cell phenotype in newly diagnosed diffuse large B-cell lymphoma: a phase II study. *J Clin Oncol* 2015;33:251–7.
- Vitolo U, Chiappella A, Franceschetti S, et al. Lenalidomide plus R-CHOP21 in elderly patients with untreated diffuse large B-cell lymphoma: results of the REAL07 open-label, multicentre, phase 2 trial. *Lancet Oncol* 2014;15:730–7.
- Wang M, Fowler N, Wagner-Bartak N, et al. Oral lenalidomide with rituximab in relapsed or refractory diffuse large cell, follicular and transformed lymphoma: a phase II clinical trial. *Leukemia* 2013;27:1902–9.
- Martin A, Redondo AM, Dlouhy I, et al. Lenalidomide in combination with R-ESHAP in patients with relapsed or refractory diffuse large B-cell lymphoma: a phase 1B study from GELTAMO group. *Br J Haematol* 2016;173:245–52.
- Sarkozy C, Sehn LH. Management of relapsed/refractory DLBCL. *Best Pract Res Clin Haematol* 2018;31:209–16.
- Qu P, Wang L-Z, Lin PC. Expansion and functions of myeloid-derived suppressor cells in the tumor microenvironment. *Cancer Lett* 2016;380:253–6.
- Gabrilovich DI. Myeloid-Derived suppressor cells. *Cancer Immunol Res* 2017;5:3–8.
- Gabrilovich DI, Bronte V, Chen S-H, et al. The terminology issue for myeloid-derived suppressor cells. *Cancer Res* 2007;67:425–6.
- de Haas N, de Koning C, Spilgies L, et al. Improving cancer immunotherapy by targeting the state of MDSCs. *Oncimmunology* 2016;5:e1196312.
- Schmidt A, Oberle N, Krammer PH. Molecular mechanisms of Treg-mediated T cell suppression. *Front Immunol* 2012;3:51.
- Głowała-Kosińska M, Chwieduk A, Nieckula J, et al. Association of circulating regulatory T cell number with the incidence and prognosis of diffuse large B-cell lymphoma. *Eur J Haematol* 2013;91:122–8.
- Chang C, Wu S-Y, Kang Y-W, et al. High levels of regulatory T cells in blood are a poor prognostic factor in patients with diffuse large B-cell lymphoma. *Am J Clin Pathol* 2015;144:935–44.
- Croft M, So T, Duan W, et al. The significance of OX40 and OX40L to T-cell biology and immune disease. *Immunol Rev* 2009;229:173–91.
- Chen DS, Mellman I. Elements of cancer immunity and the cancer-immune set point. *Nature* 2017;541:321–30.
- Goodman A, Patel SP, Kurzrock R. PD-1-PD-L1 immune-checkpoint blockade in B-cell lymphomas. *Nat Rev Clin Oncol* 2017;14:203–20.
- Perry AM, Mitrovic Z, Chan WC. Biological prognostic markers in diffuse large B-cell lymphoma. *Cancer Control* 2012;19:214–26.
- Vaidya R, Witzig TE. Prognostic factors for diffuse large B-cell lymphoma in the R(X)CHOP era. *Ann Oncol* 2014;25:2124–33.
- Lin Y, Gustafson MP, Bulur PA, et al. Immunosuppressive CD14+HLA-DR(low)/- monocytes in B-cell non-Hodgkin lymphoma. *Blood* 2011;117:872–82.
- Canè S, Ugel S, Trovato R, et al. The endless SAGA of monocyte diversity. *Front Immunol* 2019;10:10.
- Wu C, Wu X, Zhang X, et al. Prognostic significance of peripheral monocytic myeloid-derived suppressor cells and monocytes in patients newly diagnosed with diffuse large B-cell lymphoma. *Int J Clin Exp Med* 2015;8:15173–81.
- Azzaoui I, Uhel F, Rossille D, et al. T-Cell defect in diffuse large B-cell lymphomas involves expansion of myeloid-derived suppressor cells. *Blood* 2016;128:1081–92.
- Wu C-X, Qiang M, Hao J-Q. [Prognostic Value of CD14+HLA-DR<sup>low</sup>- Myeloid Derived Suppressor Cells in Diffuse Large B Cell Lymphoma]. *Zhongguo Shi Yan Xue Ye Xue Za Zhi* 2019;27:816–9.
- Frydrychowicz M, Boruckowski M, Kolecka-Bednarczyk A, et al. The dual role of Treg in cancer. *Scand J Immunol* 2017;86:436–43.
- Baraka A, Salem HM. Clinical significance of T-regulatory cells in B-cell non-Hodgkin's lymphoma. *Egypt J Immunol* 2011;18:23–30.
- Yin Q, Chen L, Li Q, et al. Changes of T-lymphocyte subpopulation and differential expression pattern of the T-bet and GATA-3 genes in diffuse large B-cell lymphoma patients after chemotherapy. *Cancer Cell Int* 2014;14:1–11.
- Boulassel M-R, Al Qarni Z, Burney I, et al. Levels of regulatory T cells and invariant natural killer cells and their associations with regulatory B cells in patients with non-Hodgkin lymphoma. *Mol Clin Oncol* 2018;9:677–82.
- Battella S, Cox MC, La Scaleia R, et al. Peripheral blood T cell alterations in newly diagnosed diffuse large B cell lymphoma patients and their long-term dynamics upon rituximab-based chemoimmunotherapy. *Cancer Immunol Immunother* 2017;66:1295–306.
- Rusak M, Bolkun Łukasz, Chociej-Stypułkowska J, et al. Flow-cytometry-based evaluation of peripheral blood lymphocytes in prognostication of newly diagnosed DLBCL patients. *Blood Cells Mol Dis* 2016;59:92–6.
- Pollari M, Pellinen T, Karjalainen-Lindsberg M-L, et al. Adverse prognostic impact of regulatory T-cells in testicular diffuse large B-cell lymphoma. *Eur J Haematol* 2020;105:712–21.
- Ghesquieres H, Chevrier M, Laadhari M, et al. Lenalidomide in combination with intravenous rituximab (REVRI) in relapsed/refractory primary CNS lymphoma or primary intraocular lymphoma: a multicenter prospective 'proof of concept' phase II study of the French Oculo-Cerebral lymphoma (LOC) Network and the Lymphoma Study Association (LYSA)†. *Ann Oncol* 2019;30:621–8.
- Buchan SL, Rogel A, Al-Shamkhani A. The immunobiology of CD27 and OX40 and their potential as targets for cancer immunotherapy. *Blood* 2018;131:39–48.
- Kwon D, Kim S, Kim P-J, et al. Clinicopathological analysis of programmed cell death 1 and programmed cell death ligand 1 expression in the tumour microenvironments of diffuse large B cell lymphomas. *Histopathology* 2016;68:1079–89.
- Fang X, Xiu B, Yang Z, et al. The expression and clinical relevance of PD-1, PD-L1, and TP63 in patients with diffuse large B-cell lymphoma. *Medicine* 2017;96:e6398.
- Zhang L, Du H, Xiao T-wu, et al. Prognostic value of PD-1 and Tim-3 on CD3+ T cells from diffuse large B-cell lymphoma. *Biomed Pharmacother* 2015;75:83–7.
- Zhang W, Bai J-F, Zuo M-X, et al. PD-1 expression on the surface of peripheral blood CD4<sup>+</sup> T cell and its association with the prognosis of patients with diffuse large B-cell lymphoma. *Cancer Med* 2016;5:3077–84.
- Ramsay AG, Clear AJ, Fatah R, et al. Multiple inhibitory ligands induce impaired T-cell immunologic synapse function in chronic lymphocytic leukemia that can be blocked with lenalidomide: establishing a reversible immune evasion mechanism in human cancer. *Blood* 2012;120:1412–21.
- Autio M, Leivonen S-K, Brück O. Immune cell constitution in the tumour microenvironment predicts the outcome in diffuse large B-cell lymphoma. *Haematologica* 2020.
- Cortegana CJ, Carrión NP, Fernández EN, et al. Evolution of myeloid-derived suppressor cells and objective response rate in relapsed/refractory diffuse large B cell lymphoma (R/R DLBCL) patients after receiving immunotherapy. *Ann Oncol* 2019;30:v515–6.
- Palazón-Carrión N, Jiménez-Cortegana C, Holgado E, et al. Evolution of the myeloid-derived suppressor cells in advanced breast cancer and comparative analysis with a healthy population cohort. *J Clin Oncol* 2019;37:2543.



- 48 Palazón-Carrión N, Sánchez-León ML, Jiménez-Cortegana C, *et al.* Myeloid derived-suppressor cells in healthy women in advanced breast cancer patients. *Ann Oncol* 2019;30:III19.
- 49 de la Cruz-Merino L, Chiesa M, Caballero R, *et al.* Breast cancer immunology and immunotherapy: current status and future perspectives. *Int Rev Cell Mol Biol* 2017;331:1–53.